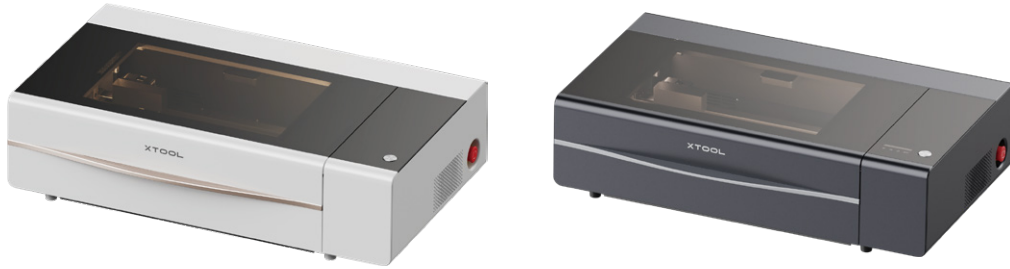


# XTOOL | P2S

## Quick Start Guide

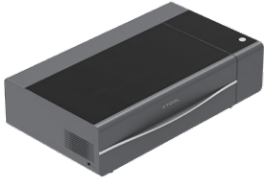




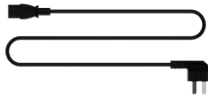
xTool P2S bietet zwei Farbvarianten. In diesem Benutzerhandbuch wird zur Veranschaulichung die schwarze Version verwendet.

<b>List of items</b>	<b>01</b>
<b>Open the box and take out all the items</b>	<b>01</b>
<b>Meet your xTool P2S</b>	<b>04</b>
<b>Preparations</b>	<b>05</b>
<b>Use xTool P2S</b>	<b>11</b>
<b>Understand the indicator and screen</b>	<b>12</b>
<b>Use the material clamps</b>	<b>13</b>
<b>Clean the fan</b>	<b>14</b>
<b>Clean the filter screens</b>	<b>15</b>

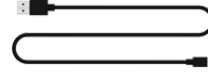
## List of items



xTool P2S



Power cable



USB cable (Type-C)



Key



Smoke exhaust pipe components



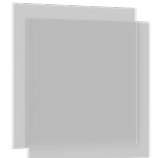
Antifreeze



Funnel



Basswood 3 mm



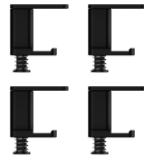
Transparent acrylic



Screwdriver



Hex key



Material clamp



Screw M3\*6  
(spare parts)



Screw M3\*22  
(spare part)



Self-Check Guide



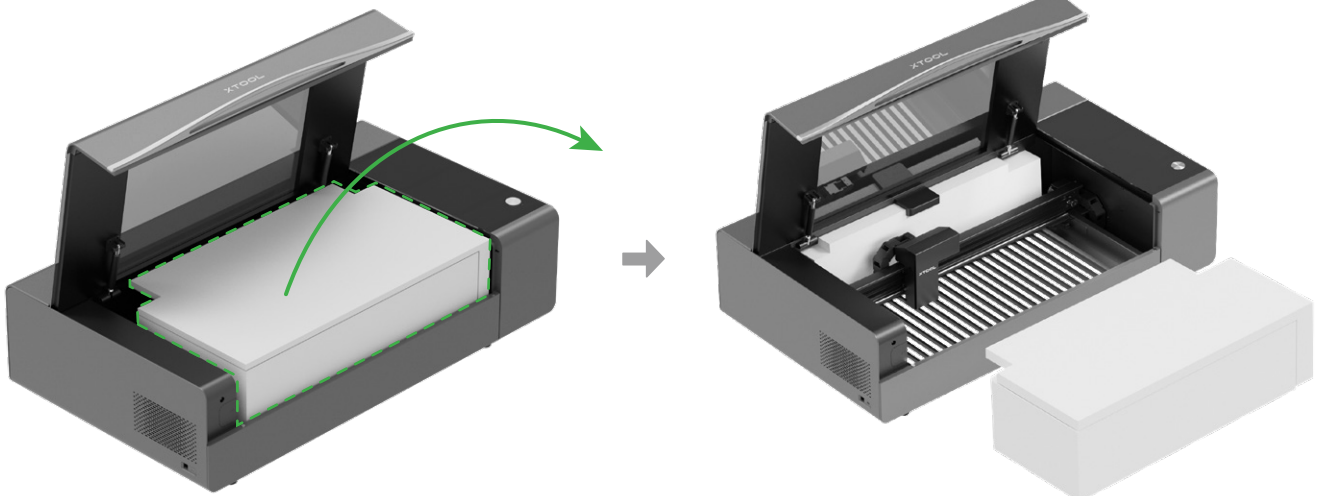
Quick Start Guide



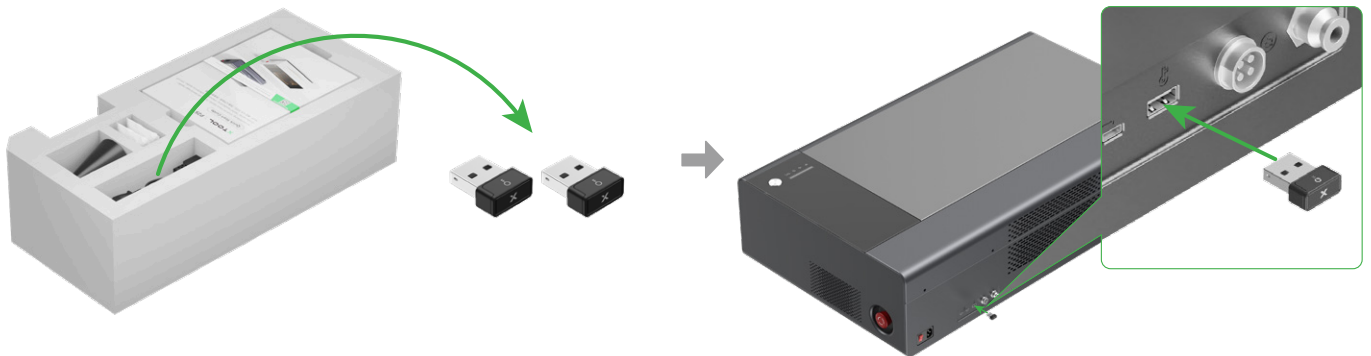
Safety Instructions

## Open the box and take out all the items

### 1 Open the lid and take out the items



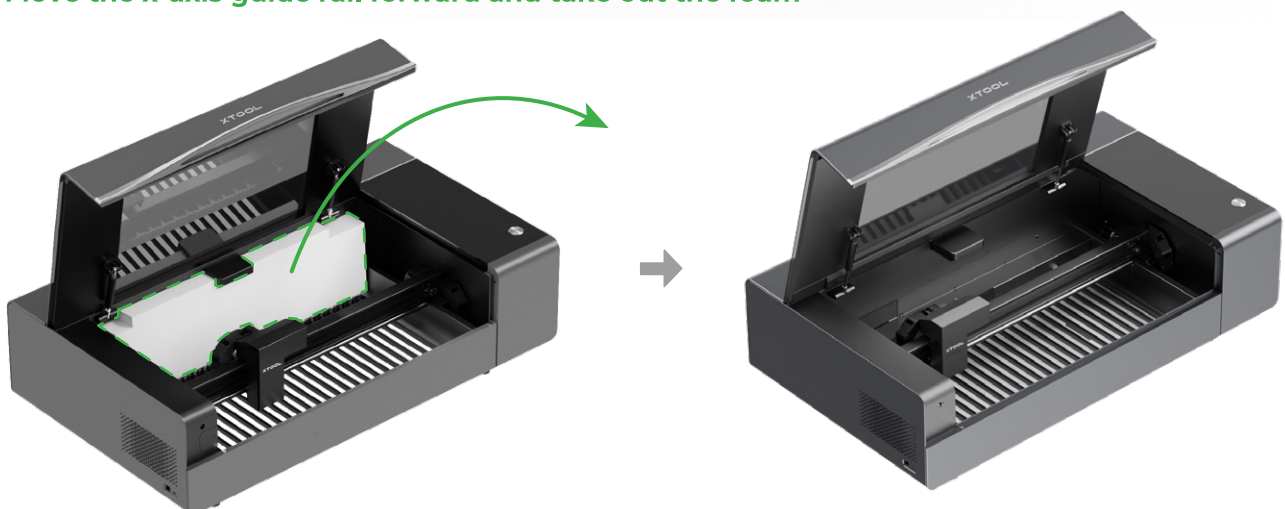
**2** Take out the keys and insert one of it into the machine.



**3** Remove the thumb screws and brackets at the left and right ends of the x-axis guide rail

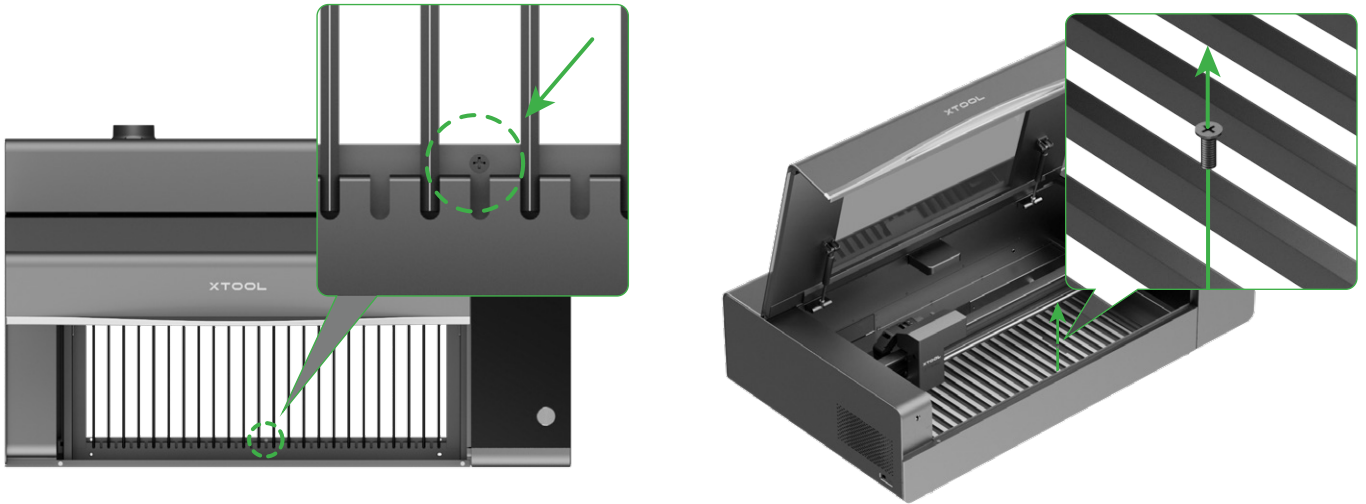


**4** Move the x-axis guide rail forward and take out the foam

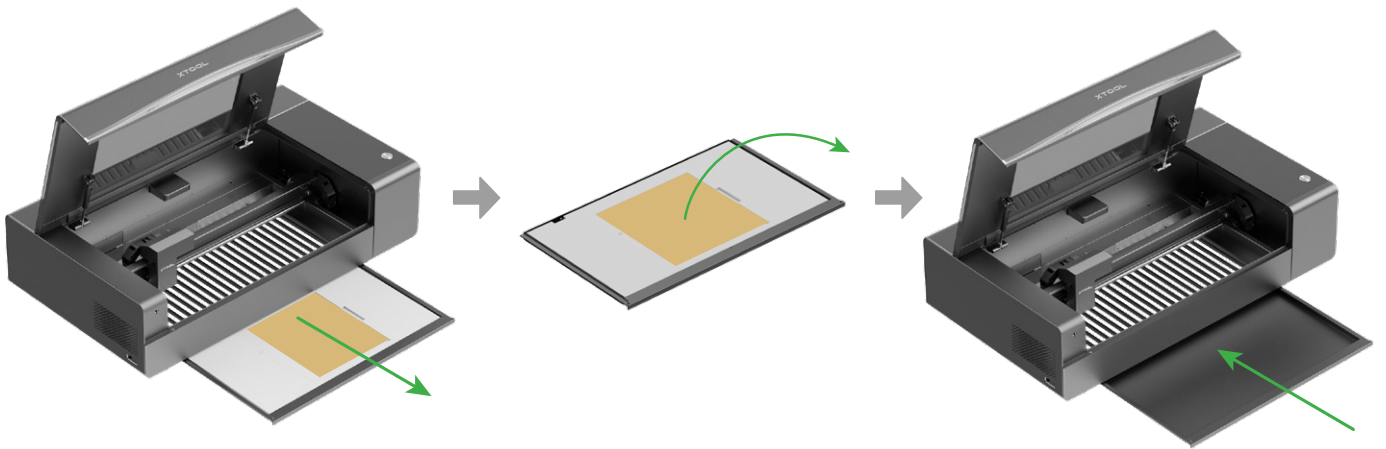




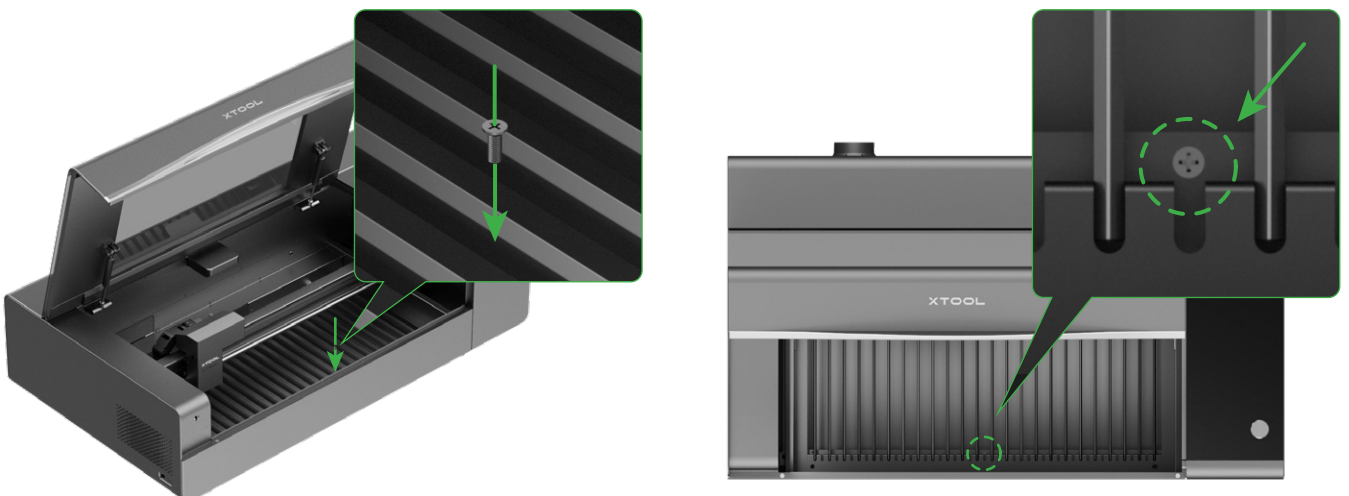
**5** Unscrew the screw that fixes the baseplate



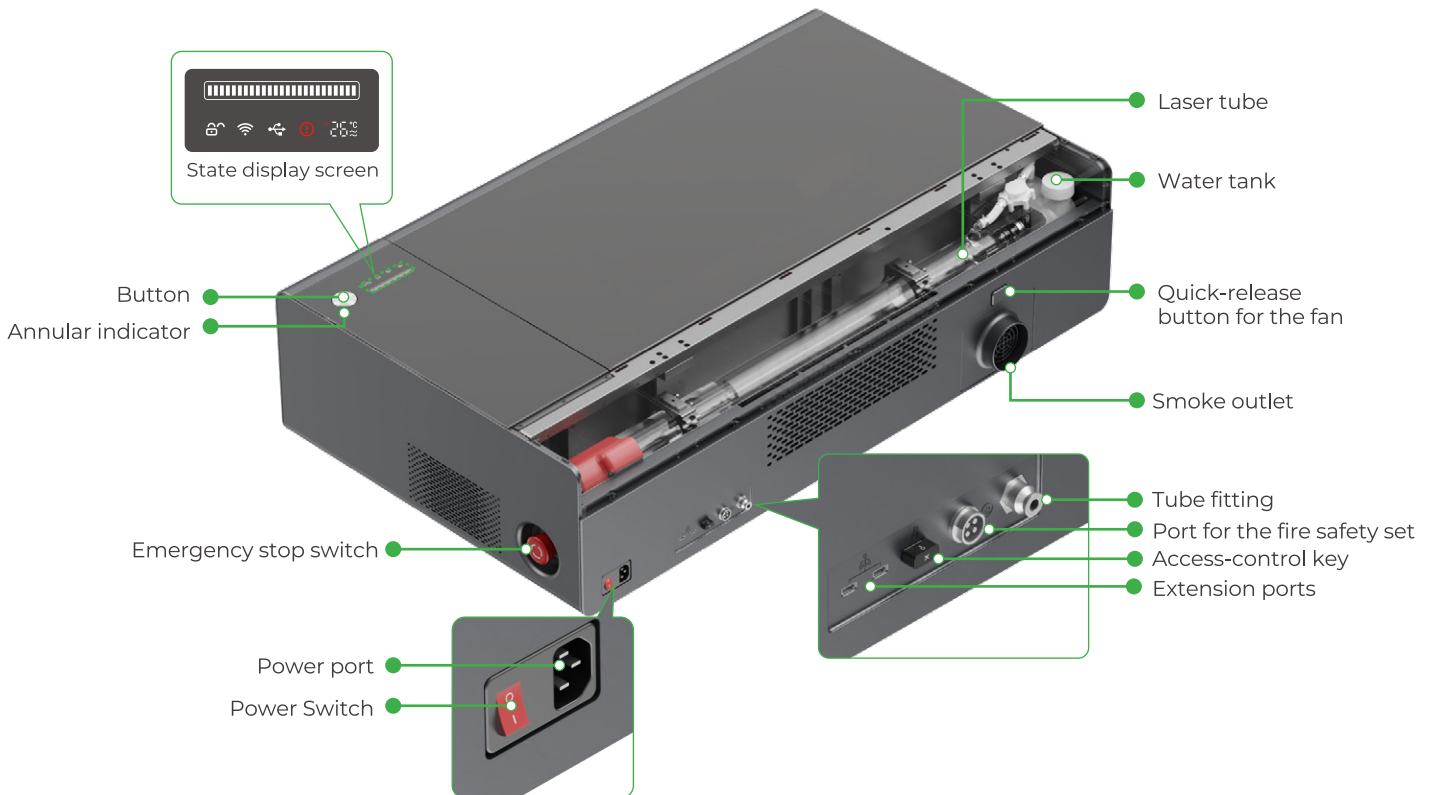
**6** Take out the foam and acrylic sheets and put the baseplate back to the machine



**7** Tighten the screw that fixes the baseplate



# Meet your xTool P2S



## Preparations



Do not connect the machine to a power supply until you are instructed to.

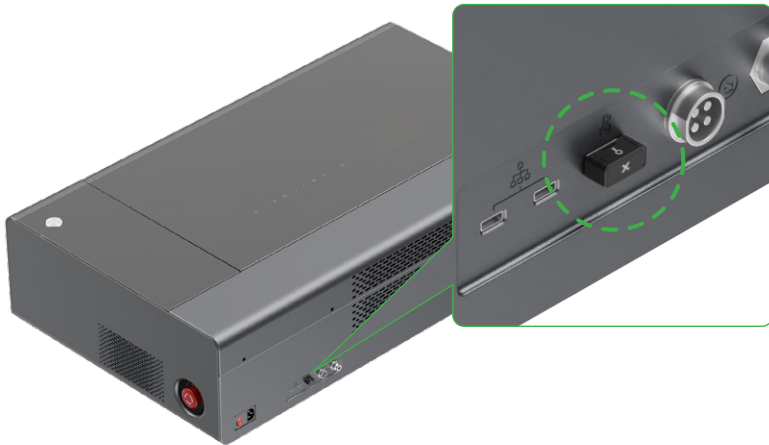
- 1 Check the casing of the machine. If it is severely damaged, do not use the machine and contact xTool after-sales services.**



- 2 Remove the sticker and turn the emergency stop switch to reset it.**



**3 Check the access-control key. Ensure that it is inserted in place.**



<https://support.xtool.com/article/1367>

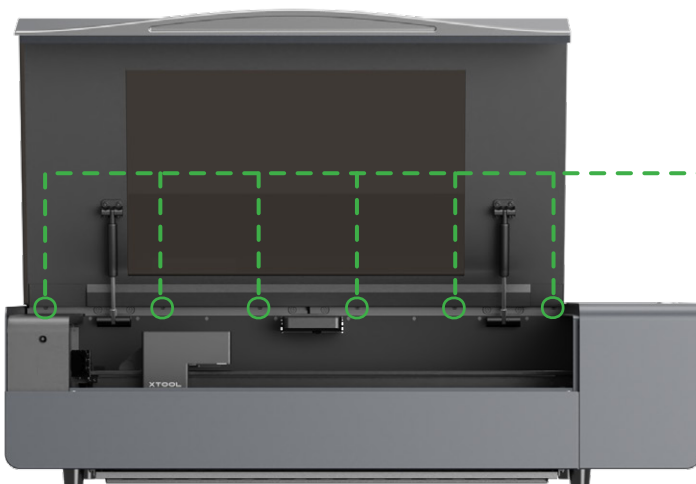
The key can function as both an access control key and an interlock connector. Go to <https://support.xtool.com/article/1367> to learn more.

**4 Manually move the laser module to check whether it can move properly. If it can't, do not use the machine and contact xTool after-sales services.**

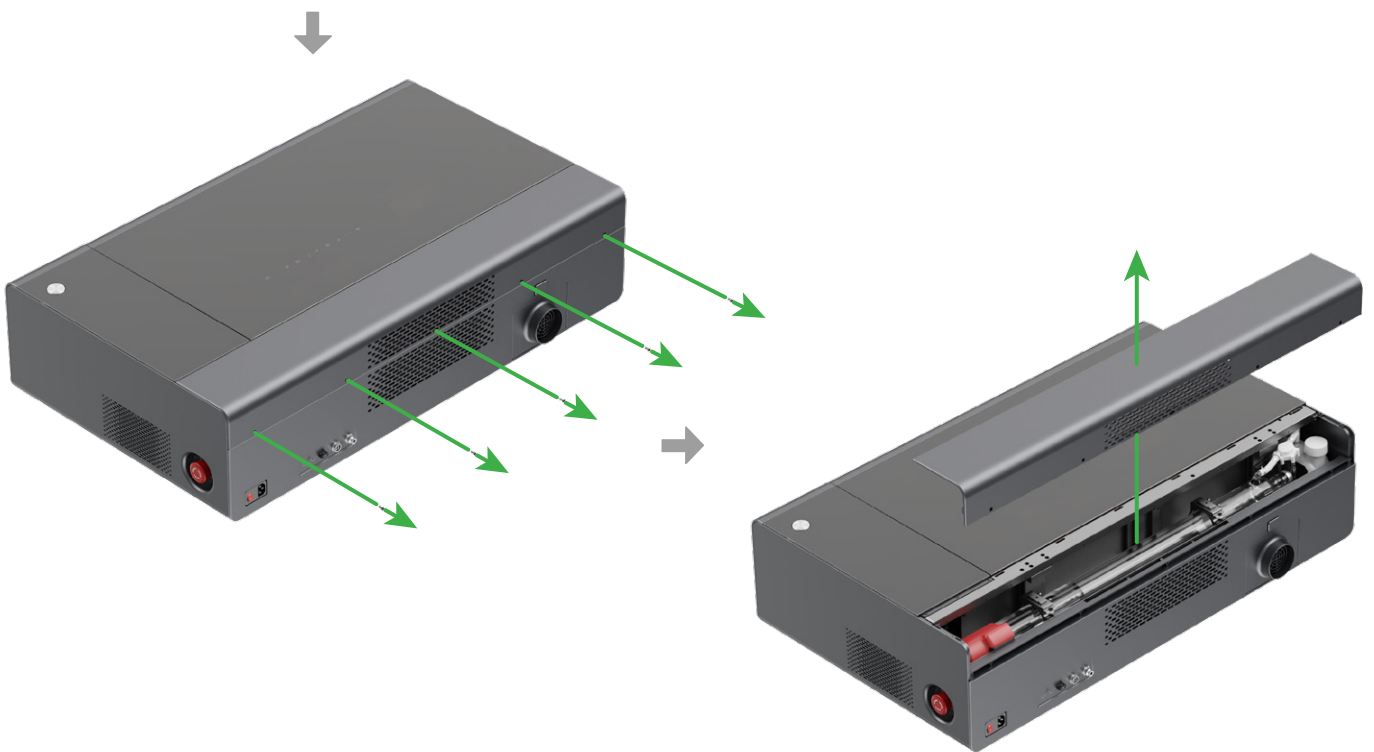
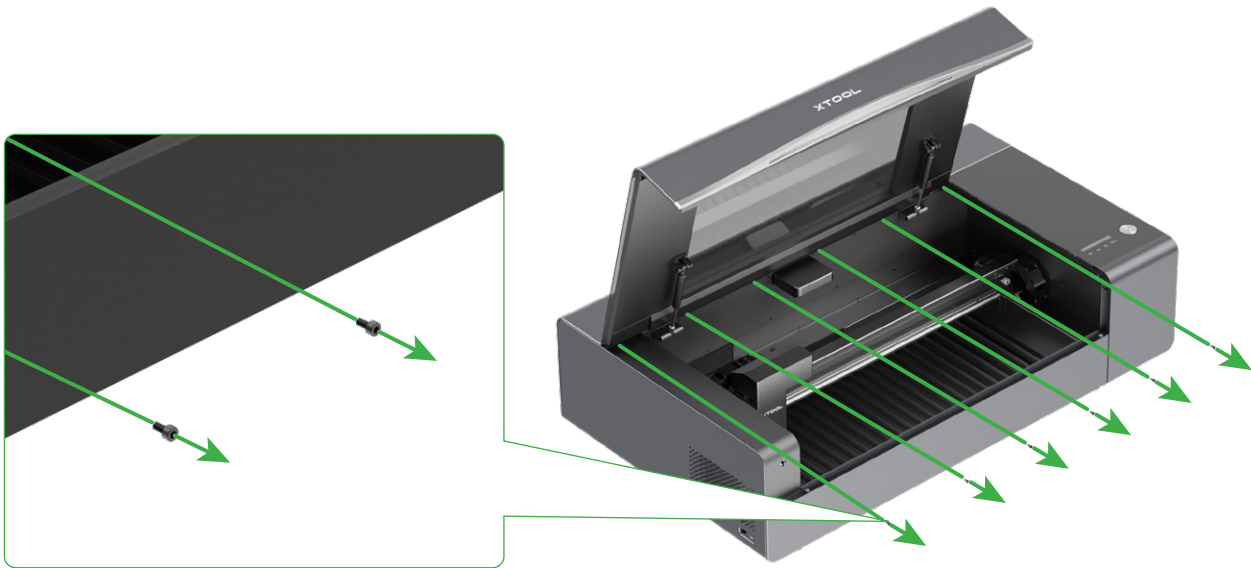


**5 Check the laser tube. If it is cracked or damaged, do not use the machine and contact xTool after-sales services.**

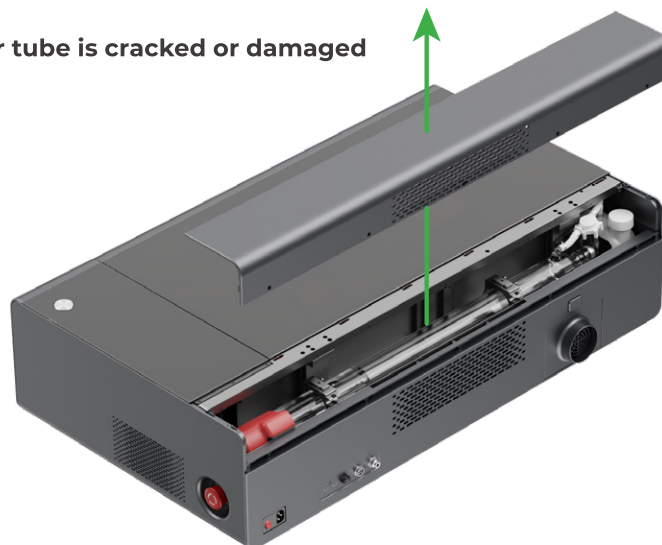
(1) Unscrew the screws that fix the rear cover and remove it







**(2) Check whether the laser tube is cracked or damaged**



## 6 Fill the water tank with antifreeze.



You need to prepare a measuring glass to measure purified water.



If you can't find a measuring glass at home, you can store the remaining antifreeze in another container and use the bottle of the antifreeze to measure purified water.



- Determine the volume of the antifreeze to be used according to the annual lowest temperature in your region first.
- Ensure that you use purified water to prepare the antifreeze. Tap water contains impurities and bleach, which may cause too many bubbles, affecting the working of the laser tube and even damaging the laser tube.
- You need to fill the water tank twice. Strictly follow the steps to fill the water tank, using the recommended volume of antifreeze and avoiding overflow.

### (1) Determine the volumes of antifreeze and purified water to be used

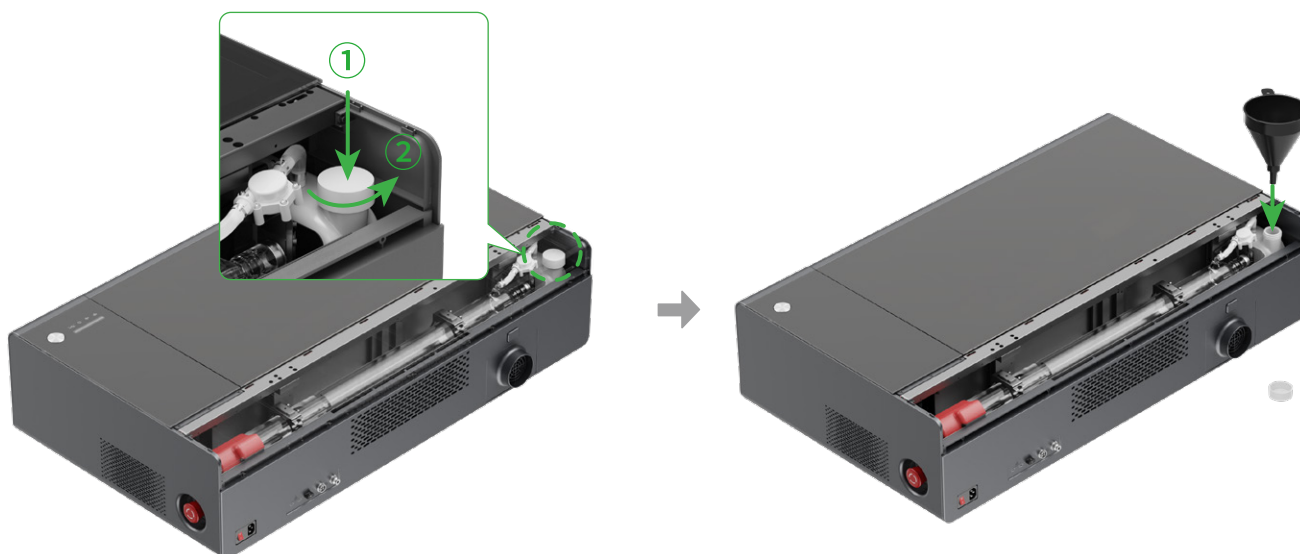
- If the annual lowest temperature in your region  $> 0^{\circ}\text{C}$

Annual lowest temperature in your region ( $^{\circ}\text{C}$ )	Concentration (%)	First filling		Second filling
		Antifreeze (ml)	Purified water (ml)	Purified water (ml)
$T > 0$	0	0	1100	300

- If the annual lowest temperature in your region  $\leq 0^{\circ}\text{C}$

Annual lowest temperature in your region ( $^{\circ}\text{C}$ )	Concentration (%)	First filling		Second filling
		Antifreeze (ml)	Purified water (ml)	Purified water (ml)
$-10 \leq T \leq 0$	20	280	820	300
$-20 \leq T \leq -10$	35	490	610	300
$-30 \leq T \leq -20$	45	630	470	300
$-40 \leq T \leq -30$	50	700	400	300
$-50 \leq T \leq -40$	60	840	260	300

### (2) Open the cap of the water tank and insert the funnel into the opening

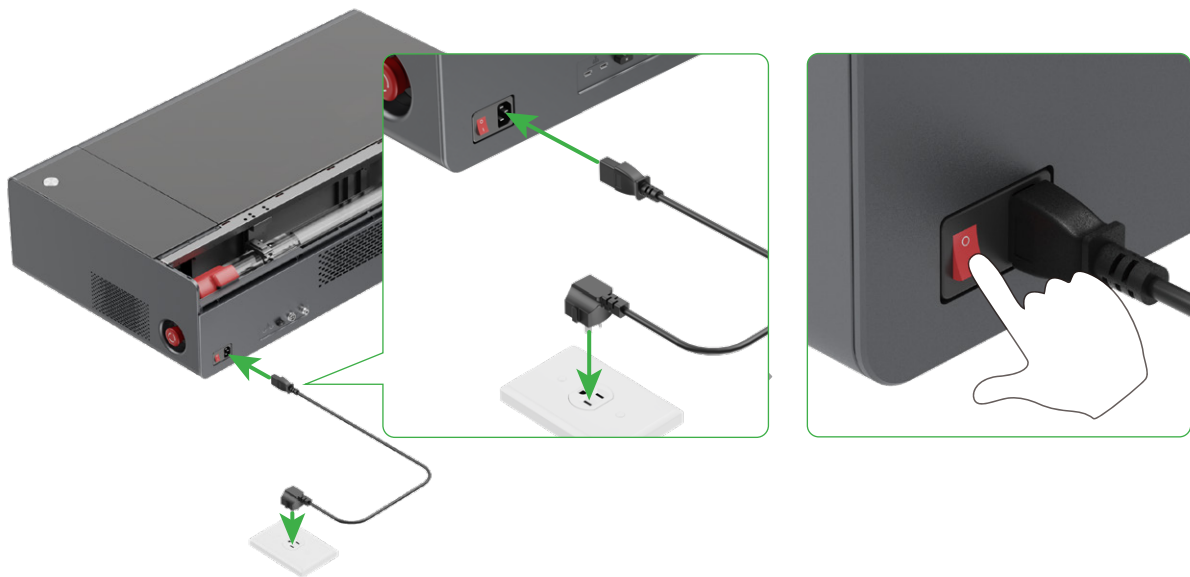


### (3) Complete the first filling

Pour the required volume of antifreeze into the water tank, and then slowly pour the required purified water in. Observe the water level during the filling to avoid overflow.



### (4) Connect the machine to a power supply and turn on the machine

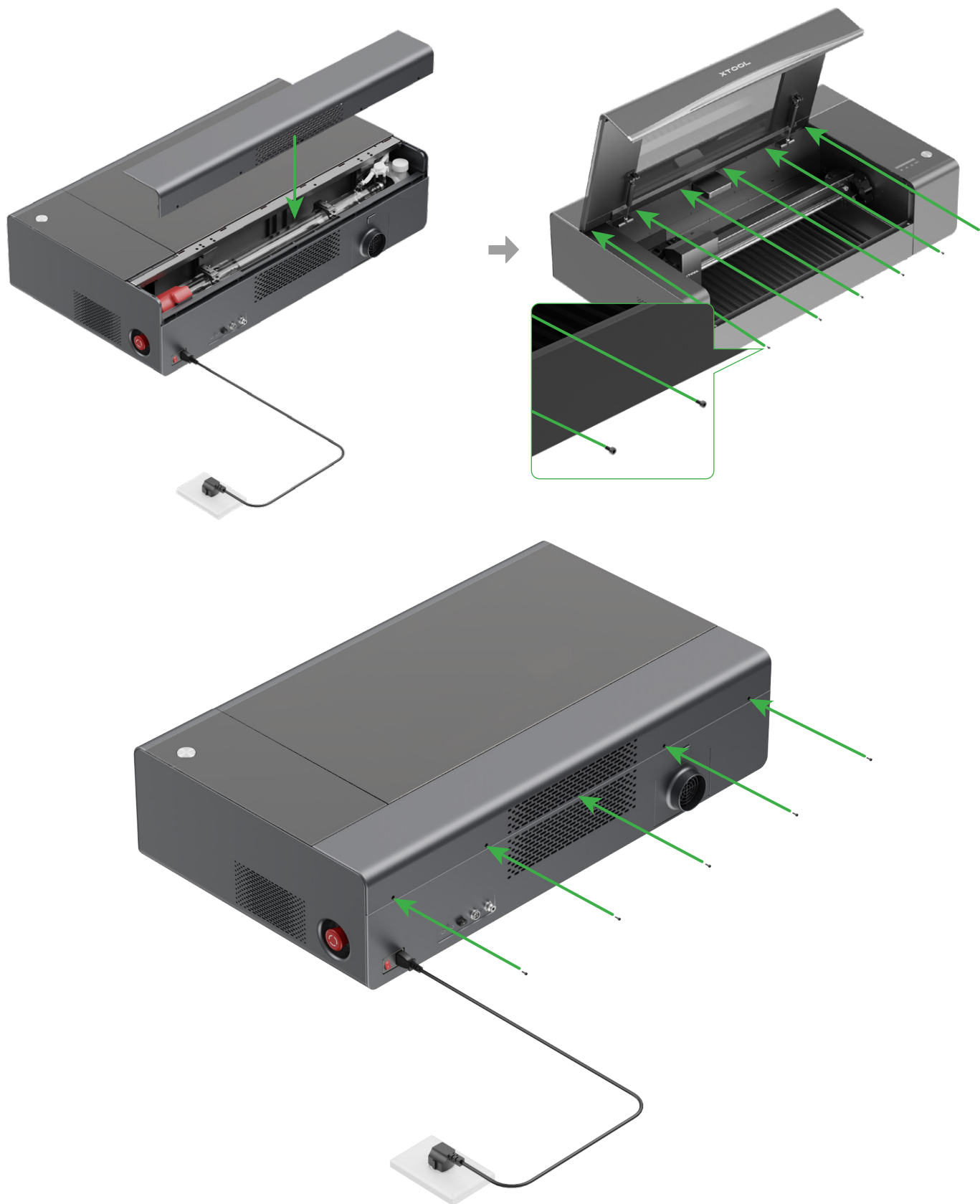


### (5) Complete the second filling

Wait 30s for the water level to descend in the water tank, pour the required purified water in, and then close the cap of the water tank. Observe the water level during the filling to avoid overflow.

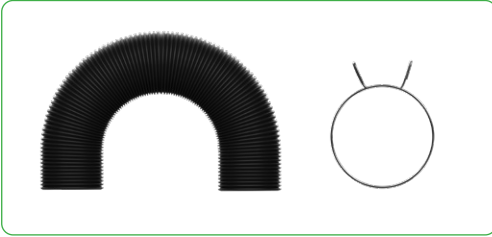


(6) Fit the rear cover back to the machine and tighten the screws

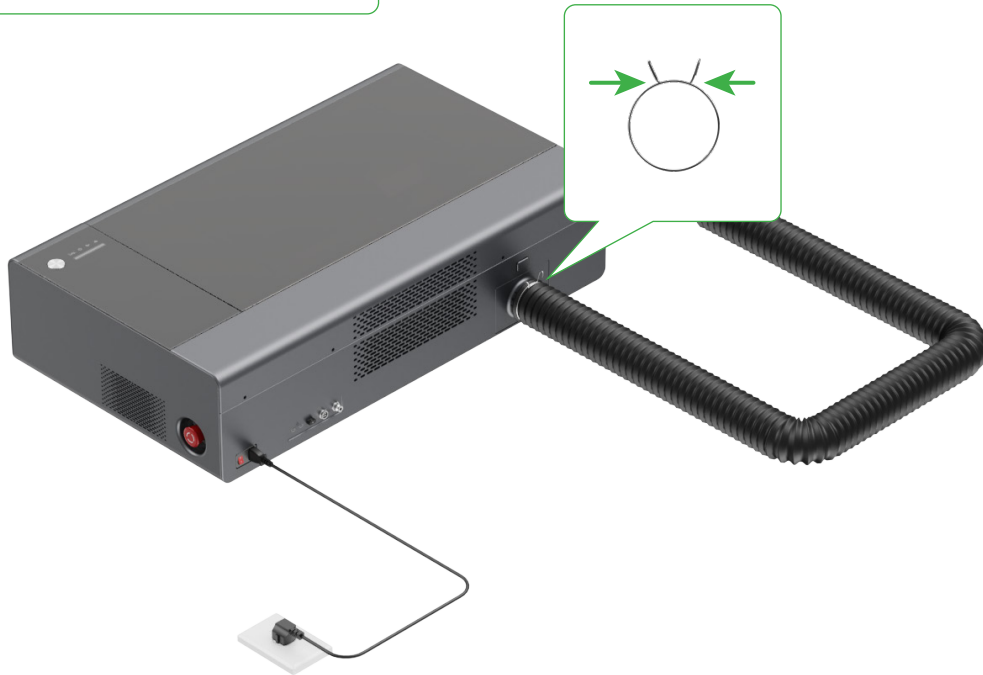




## 7 Install the smoke exhaust pipe

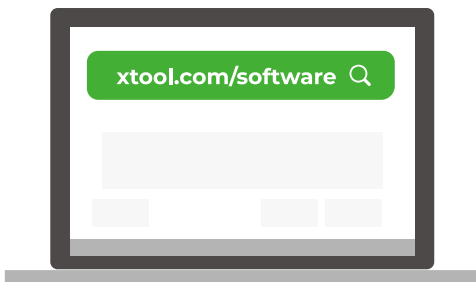


If you have purchased a smoke purifier, follow the instructions to connect it to xTool P2S.



## Use xTool P2S

Download and install xTool Creative Space (XCS)

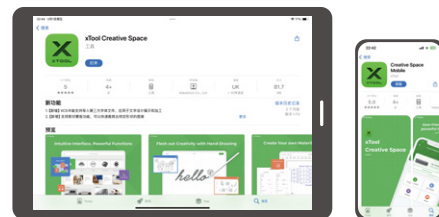


App Store



Google Play

xTool Creative Space



For details about how to use the software to operate xTool P2S, scan the QR code or visit <https://support.xtool.com/product/4>.

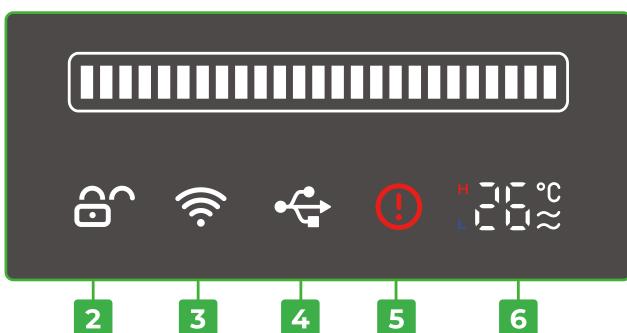


<https://support.xtool.com/product/4>

## Understand the indicator and screen

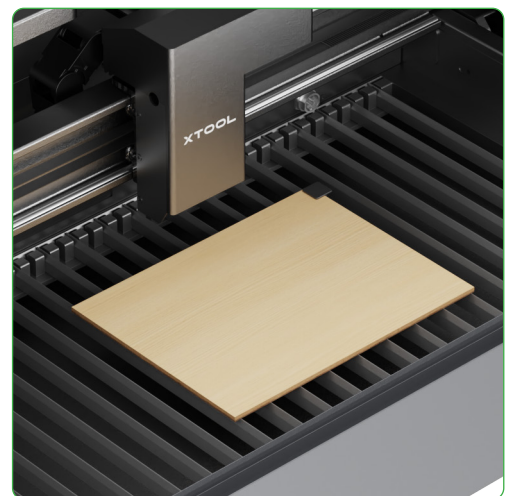
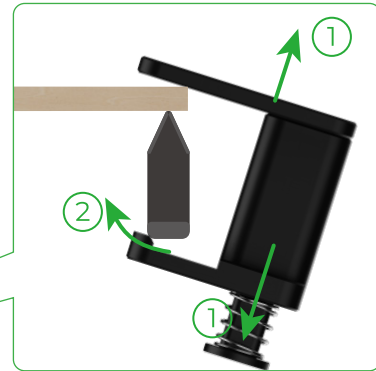
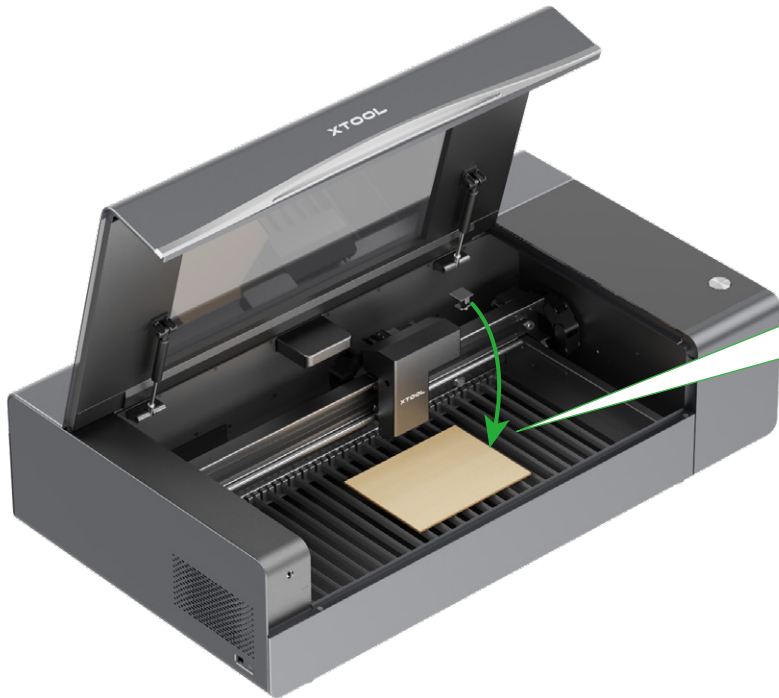
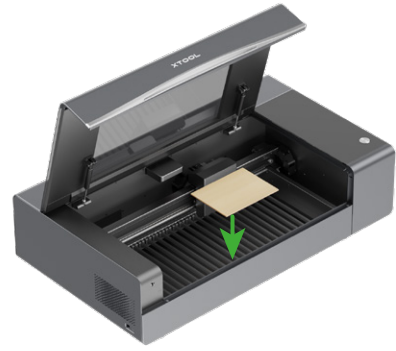
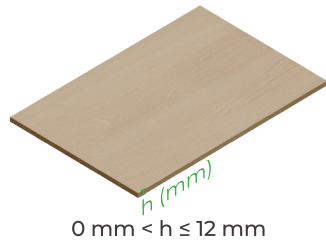
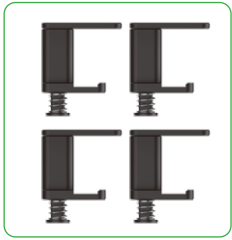
Annular indicator	Screen	Device
Blinking white	/	Starting
Solid white	Displays the temperature and lid locked/unlocked state	Standby, not connected
Solid white	Displays the icon of the connection mode	Standby, connected
Breathing green	/	Sleeping
Blinking blue and then solid blue	/	Ready to work
Solid blue	Progress bar blinks and moves	Performing a task
Solid blue	Progress bar stops moving	Task paused
Solid green	/	Task completed
Solid white	/	Task canceled
Solid purple	/	Firmware updating
Solid red	Fault indicator lit up	Exceptions occur
/	H or L lit up	Liquid temperature alarm H: Temperature too high L: Temperature too low
Breathing blue	/	Calibrating or image recognizing
Solid red	/	Calibration or recognition failed. You can open and then close the lid or use XCS to bring the device back to the standby state.
Solid yellow	/	Waiting for AP network setting. You can hold down the button on xTool P2S for 5 seconds to start AP network setting. If no network is set within 2 minutes, the device goes back to the standby state. Name of the AP hotspot: XTOOL-P2S-Last 6 digits of MAC address

**Note:** "/" indicates no state change.



1. Progress bar
2. Lid locked / unlocked  
Do not open the lid forcibly when it is locked. You can press the button on xTool P2 to unlock it before opening it.
3. Connected through Wi-Fi
4. Connected by using the USB cable
5. Exceptions occur
6. Liquid temperature  
H: Temperature too high  
L: Temperature too low

## Use the material clamps



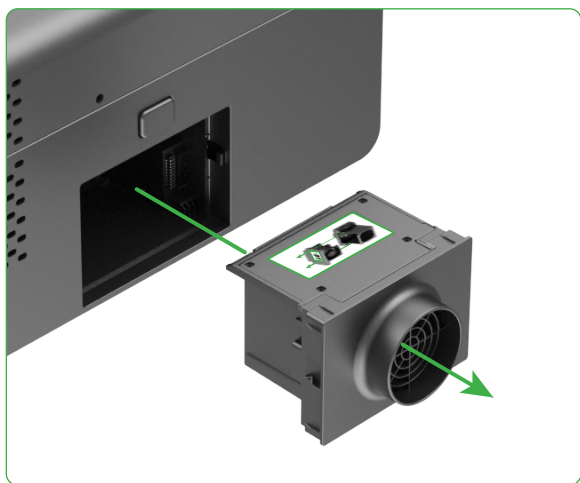
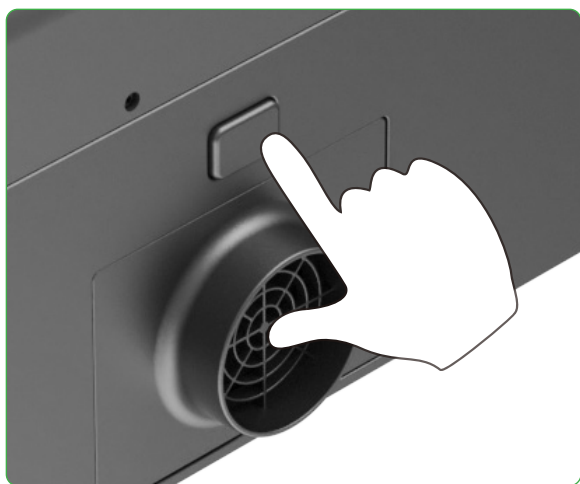
Fit the other three material clamps in the same way.

## Clean the fan

- 1 Turn off the machine and any accessories connected to it.



- 2 Press the quick-release button to remove the fan from the machine.

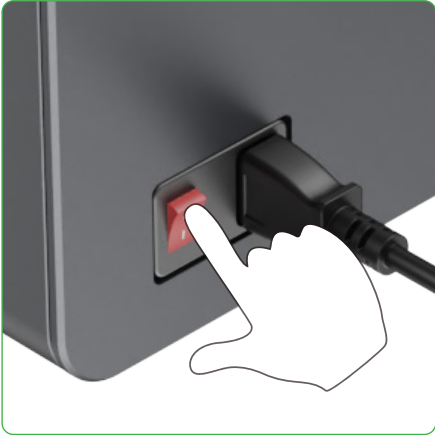


- 3 Clean the fan blades with a tissue or cotton swab moistened with clean water or alcohol. Then install the fan back to the machine.

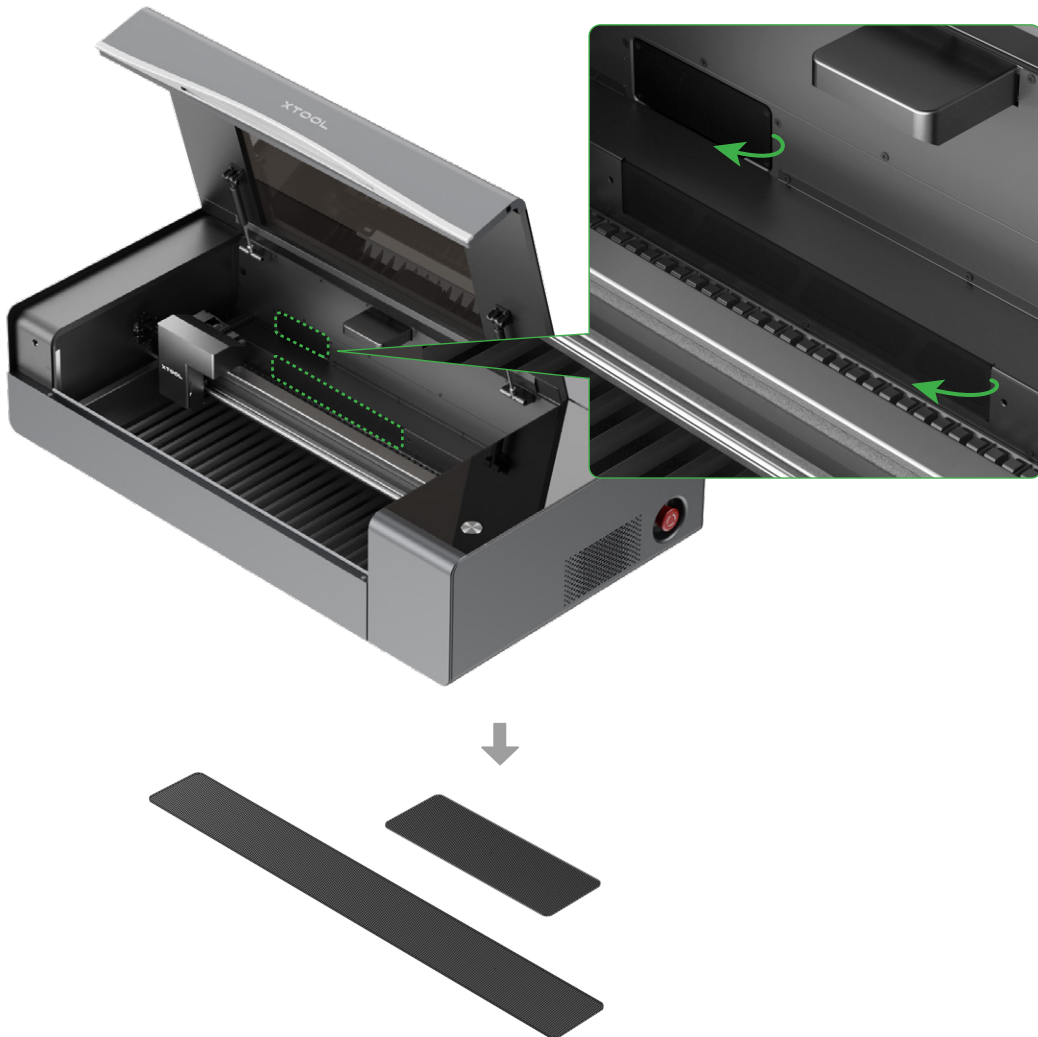


## Clean the filter screens

- 1 Turn off the machine and any accessories connected to it.



- 2 Remove the filter screens from the machine.



- 3 Clean the filter screens with a tissue or cotton swab moistened with clean water or alcohol. Then install them back to the machine.

**X**TOOL